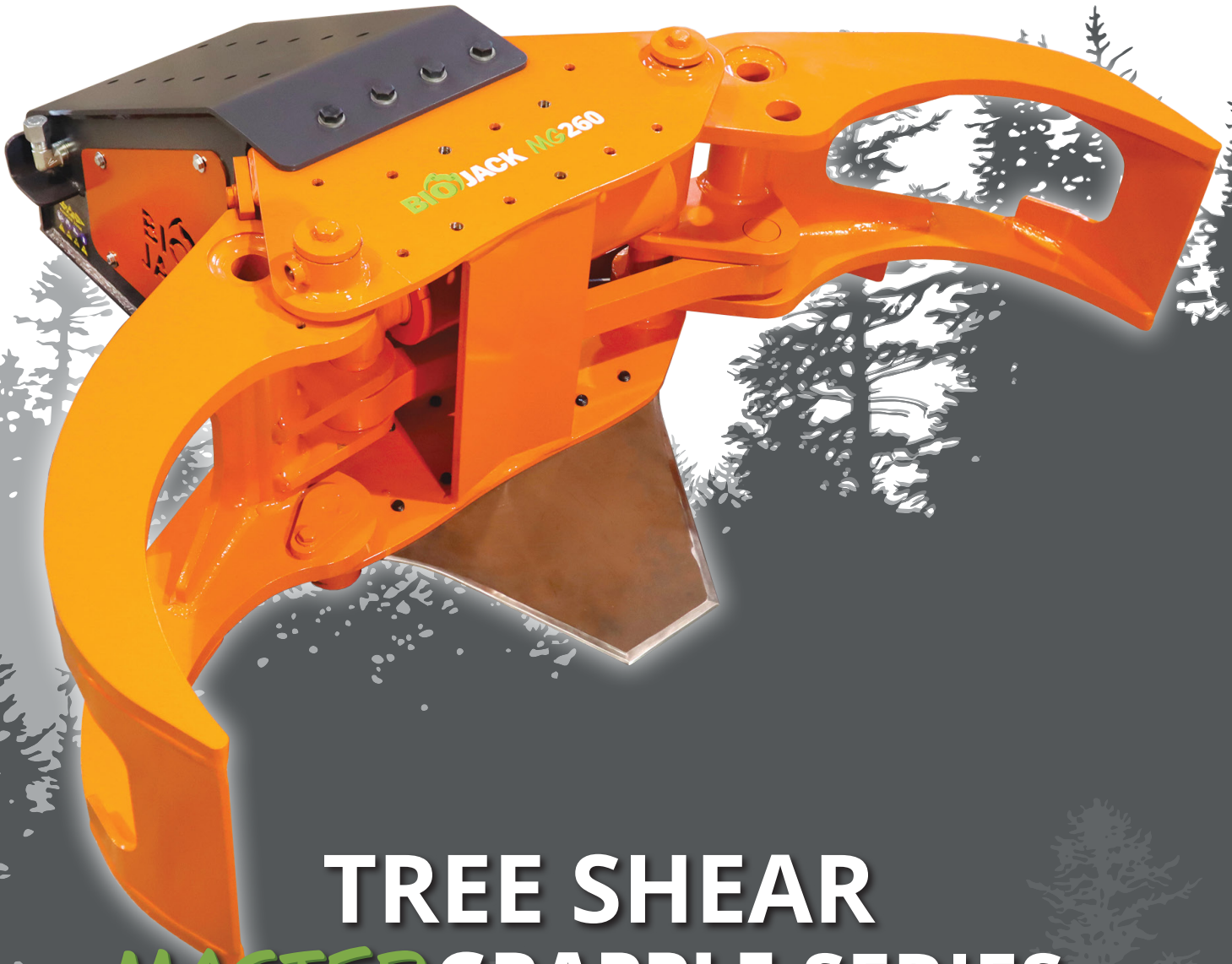




BIOJACK[®] MG260



TREE SHEAR MASTER GRAPPLE SERIES

✓ **VERY WIDE GRAPPLE**
MAX OPENING 147 CM

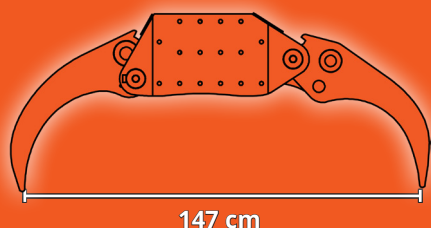
✓ **SHEAR CUT Ø26 CM**
WITH A STRONG CYLINDER

✓ **TOUGH STRUCTURE**
EXCAVATORS 6 - 12 T

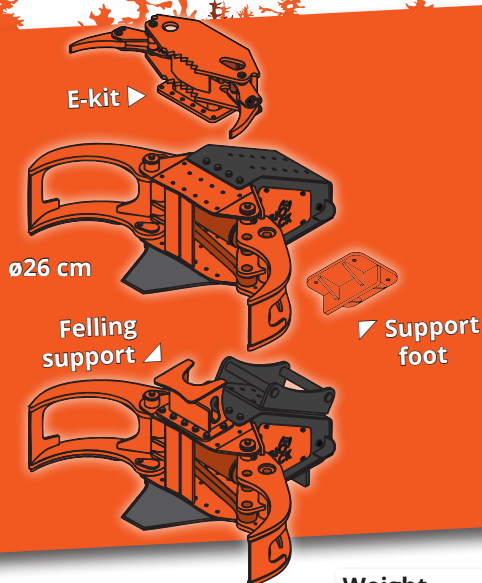


MADE IN FINLAND

Biojack Oy | www.biojack.fi
Valimotie 1, FI-25500 Perniö | info@biojack.fi



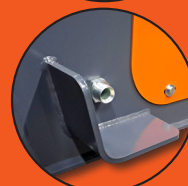
HARDOX®
IN MY BODY



Quick knife removal



Hose guards



Grapple stoppers



The **MASTERGRAPPLE** is a very tough grapple for **6-12 t excavators**, made of the best quality steel for ensuring a robust and long lasting structure, while being a light weight.

A wide opening of 147 cm is the greatest advantage of this series, enabling the collection of **a large amount of stems in one single cut**, or for actually using the grapple for loading.

The **MG260 knife is removable in less than 1 minute**, easy to fit in and out.

The grapple is highly modular, meant for efficient **energy wood harvesting**, roadside clearing, and similar forestry and landscaping tasks.

Biojack grapples are durable and sturdy, manufactured in Finland, from top quality materials. All our products are user-friendly, easy and fast to use instinctively, and can be customized according to your needs, so you can simply focus on your work.

Weight	345 kg (573 lbs)
Cut diameter max	ø26 cm (10")
Cut mode	Fixed shear ø260, detachable
Grapple type	Roundwood grapple MASTERGRAPPLE 1500-series
Oil flow	100-200 L/min (26-53 gpm)
Operating pressure	250-300 bar (3625-4350 psi)
Back pressure max	30 bar (435 psi)
Grapple opening min-max	6.5-147 cm (2.5-57")
Height in felling position	51 cm (20")
Hydraulic connections	Pressure line 19 mm, 3/4" Return line 19 mm, 3/4"
Base machines	Excavators 6-12 t
Options	Felling support (+20 kg) E-kit, Accumulation grapple (+140 kg) Support foot (+22 kg) Quick movement valve Quick coupling



www.biojack.fi

CUTTING IS NOT ENOUGH



MADE IN FINLAND

Biojack Oy | www.biojack.fi

Valimotie 1, FI-25500 Perniö | info@biojack.fi